



School of Human Ecology  
UNIVERSITY OF WISCONSIN-MADISON

# Child Development Lab

## Research, Teaching, Outreach



2017-2018  
Annual Report

2017-2018

**For more than 90 years**, the School of Human Ecology has been a pioneer in early childhood development. For generations of children, students, and researchers, SoHE has continuously operated an on-site preschool that complements a three-part mission of research, teaching, and outreach.

Through the years, the emphasis of the preschool lab has shifted from one of teacher training to early childhood development, including the development of infants and toddlers. Our lab is a year-round host to numerous studies by students and faculty as well as a resource for students to complete internships and course requirements. In 2018, the preschool officially became UW-Madison's Child Development Lab to further clarify our dedication to early childhood development research capabilities within the campus and beyond.

We welcome you to learn more about our exceptional CDL and about our goal of being a national and international leader in the ecology of child well-being.

On, Wisconsin!

Soyeon Shim  
Dean, School of Human Ecology



**12**

Research Studies  
Conducted

**21**

College Courses  
Utilized the CDL

**21**

Outreach Activities  
by CDL Staff

## Table of Contents

SoHE Through the Years	1
CDL Staff	2-3
<b>Our Research</b>	<b>4-5</b>
SoHE Research Studies	6
Other Research Studies	7
<b>Our Teaching</b>	<b>8-9</b>
UW-Madison Courses	10
Other University Courses	11
<b>Our Outreach</b>	<b>12-13</b>
Presentation & Tours	14
Campus Outreach	15
<b>Case Study</b>	<b>16</b>
<b>Five Year Strategic Plan</b>	<b>17</b>



## Child Development Lab

SCHOOL OF HUMAN ECOLOGY  
UNIVERSITY OF WISCONSIN-MADISON



**2017**

With a recommitment to research and teaching missions, the preschool is renamed “Child Development Lab.”

**2012**

Nancy Nicholas Hall is completed. Infant care is added and Soyeon Shim is named Dean of SoHE.

**1957**

The original Preschool Lab building is built.

**1926**

The lab school is established as a cooperative nursery school to help young mothers develop parenting skills.



# MEET OUR CDL STAFF



**Amy Wagner, Ph.D., M.A.Ed.**  
Executive Director  
1 Year



**Heather Kirkorian, Ph.D.**  
HDFS Faculty Director  
Laura M. Secord Chair in Early  
Childhood Development  
Associate Professor  
8 Years



**Jill Riley**  
Director  
18 Years



**Paula Evenson**  
Assistant Director  
9 Years



**Terri Strother**  
Assistant Director  
17 Years



**Kristin Orlowski**  
Student & Research Coordinator  
5 Years



**Kristen Krystofiak**  
4K Teacher  
Senior Instructional Specialist  
32 Years



**Jaclyn Schneider**  
Preschool Teacher  
Associate Instructional Specialist  
2 Years



**Mary Pierick, M.Ed.**  
4K Teacher  
Senior Instructional Specialist  
25 Years



**Jenny Lee, M.S.W.**  
Preschool Teacher  
Senior Instructional Specialist  
15 Years



**Katy Brechlin**  
4K Teacher  
Instructional Specialist  
6 Years



**Sarah Watrud**  
Preschool Teacher  
Instructional Specialist  
6 Years



**Linda Dykstra, M.F.A.**  
Toddler Teacher  
Instructional Specialist  
5 Years



**Esther Emmerich**  
Toddler Teacher  
Associate Instructional Specialist  
2 Years



**Laura Feist**  
Toddler Teacher  
Senior Instructional Specialist  
19 Years



**Sarah Bruhn, M.S.**  
Toddler Teacher  
Associate Instructional Specialist  
1 Year



**Cassandra Feist**  
Infant Teacher  
Senior Instructional Specialist  
25 Years



**Dana Schmock**  
Infant Teacher  
Instructional Specialist  
7 Years



**Malika Guend**  
Infant Teacher  
Senior Instructional Specialist  
18 Years



**Maria Frey**  
Infant Teacher  
Senior Instructional Specialist  
18 Years



**Emmi Lohrentz**  
Preschool Teacher  
Associate Instructional Specialist  
2 Years



**Sarah Yannett, M.S.**  
Float Teacher  
Associate Instructional Specialist  
1 Year



**Anna Boldt**  
Float Teacher  
Associate Instructional Specialist  
1 Year

“The Child Development Lab is an incredible facility run by strong individuals who truly care about the success of the college students they bring in.”

— Sarah Franke  
CDL HDFS Summer 2018 Intern

# OUR RESEARCH



**Heather Kirkorian, Ph.D., Faculty Director, Laura M. Secord Chair in Early Childhood Development, Associate Professor Human Development and Family Studies**

I have worked closely with the CDL since I arrived at UW-Madison in 2010.

In recent years, the CDL recommitted to its research mission, increasing the breadth and depth of the CDL's research activities. We have seen dramatic growth in the number of projects served, the proportion of children and families engaged in research, the number of graduate and undergraduate

students receiving hands-on research training, and the range of departments and

institutions whose research was supported by the CDL. As a result, the CDL has

become an even more valuable resource for researchers across the UW campus and beyond. Remarkably, the CDL increased its research engagement while maintaining a relationship-based perspective, ensuring that research participation is a positive experience for children and families. As a result of these efforts, the CDL community continues to support research that has local, national, and international impact.

## Research Statistics at a Glance



257 Completed  
Consent Forms



44 Student  
Researchers



226 Times CDL  
Children Participated  
in Research



Increase in Number of  
Research Studies  
from 2016-17 to 2017-18

**4.8/5**

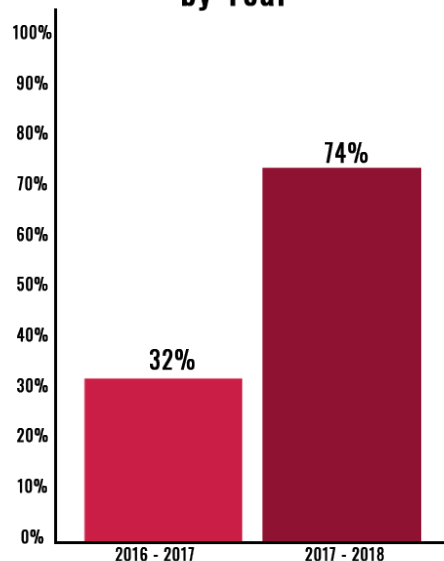
Degree of Parental Agreement

"I trust that the CDL Staff is  
supporting my child's well-being  
as she/he participates in  
research studies."

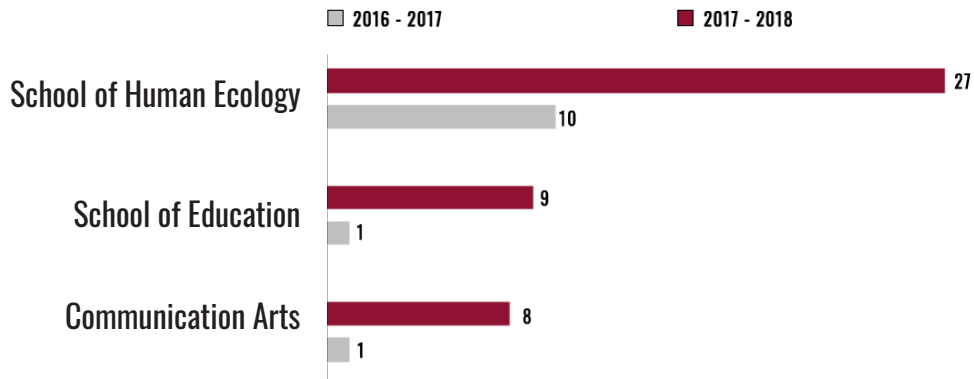


48% Increase in Number of  
Consent Forms Completed  
from 2016-17 to 2017-18

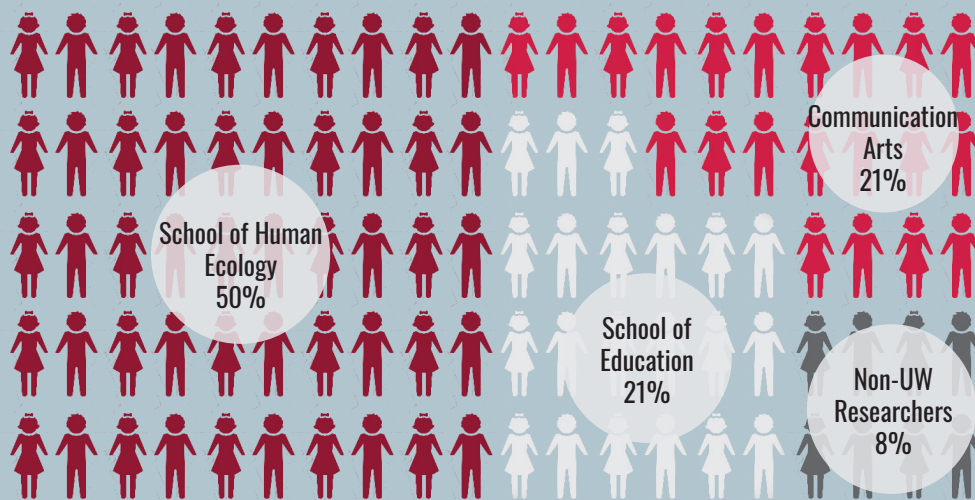
## Research Recruitment Rate by Year



## Number of Student Researchers from UW-Madison by Department and Year



## Breakdown of CDL Children Participating in Studies by Researcher Affiliation



“ It was really wonderful to receive a quick report on Dr. Kirkorian’s findings...and so quickly after the study was conducted! It was interesting to learn what they found and, as a student and a parent, I really appreciated it! ”

— Nicole  
CDL Parent and Graduate Student  
UW-Madison

## SoHE Research Studies

Title/Focus	Faculty Name/Department	Recruitment Rate	Completion Rate	# of Children Who Participated
Human Development and Family Studies				
Children's Learning Across Different Contexts	Prof. Heather Kirkorian Cognitive Development & Media Lab	80%	75%	12
Eye Tracking Study of Children's Learning from Touchscreens	Prof. Heather Kirkorian Cognitive Development & Media Lab	80%	44%	7
Children's Comprehension of and Learning from Educational Narratives	Prof. Heather Kirkorian Cognitive Development & Media Lab	89%	91%	53
Cumulative Risks, Early Development, and Emerging Academic Trajectories (CREATE) Pilot Study	Prof. Janean Dilworth-Bart Dilworth-Bart Lab	n/a*	n/a*	8
Families and Mothers (FAM study)	Prof. Janean Dilworth-Bart Dilworth-Bart Lab	n/a*	n/a*	8
Consumer Science				
The Evolution of Overconfidence	Dominik Piehlmaier Ph.D. Candidate	70%	79%	26

## Other Research Studies

Title/Focus	Faculty Name/Department	Recruitment Rate	Completion Rate	# of Children Who Participated
<b>School of Education</b>				
Timing in Science Learning	Megan Kaul Ph.D. Candidate Learning and Cognition Lab/Educational Psychology	79%	83%	25
Development of Children's Memory for Objects and Words	Prof. Haley Vlach Learning and Cognition Lab/Educational Psychology	62%	64%	23
<b>Communication Arts</b>				
Preschool Children's Response to Educational TV Programs: How do children learn from stories and songs?	Prof. Marie Louise Mares/ Dept. of Communication Arts	80%	95%	49
<b>Studies Completed by Non-UW Researchers</b>				
Children's Nutritional Choices	Prof. Celeste Schultz College of Nursing University of Illinois at Chicago and UIUC	38%	80%	8
Parent - Infant Interactions at Home	Dr. Yoko Terami Visiting Professor from Kobe-Shoin Women's University in Japan	n/a*	n/a*	4
MEP 4K Study	Katie Ostrander and Maribeth Gettinger Researchers with the Madison Educational Partnership	100%	100%	6

\*Denotes studies that did not need to meet a recruitment rate (i.e., pilot studies, training studies or studies with a convenience sample)

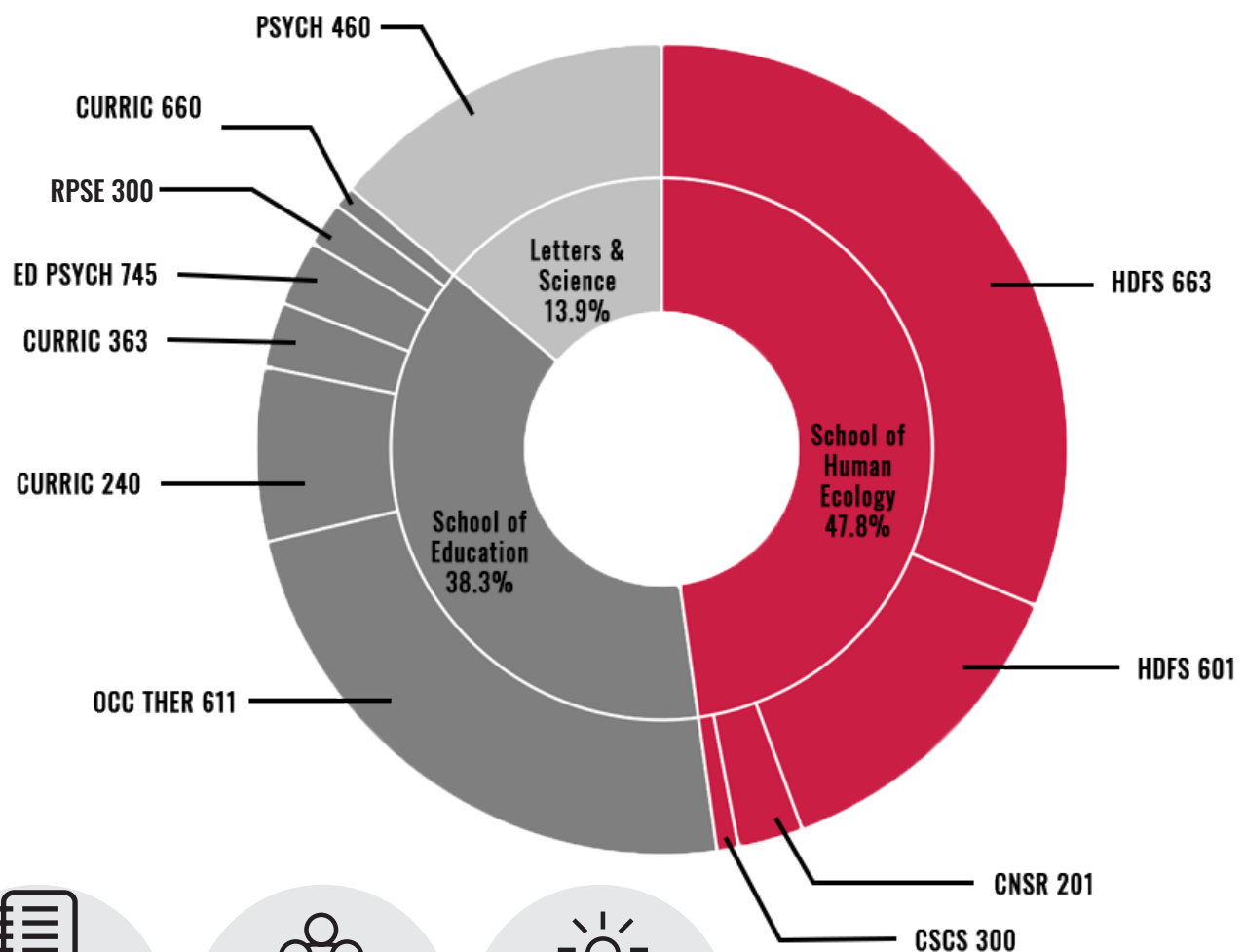
# OUR TEACHING



Amy Wagner Ph.D., M.A.Ed., Executive Director

When I was a UW undergrad, the CDL (then called the Preschool Lab) was a place where my classmates and I got a chance to see the child development concepts we were learning about in our courses come alive. Twenty years later, I am proud to say that the CDL is still that place! During the 2017-18 school year, 239 students were able to benefit from experiences as interns, student teachers, assistants, service learning students, observers, or through other coursework assignments at the CDL. It has been exciting to work with students from departments across campus and to collaborate with professors to create unique and meaningful learning experiences for UW students. The CDL teachers are dedicated to mentoring the many college students they work with and recognize their important role in training the next generation of child development professionals.

## Percent of UW Students Utilizing the CDL by School and Course



**96%** of Student Observations in Booth Required Additional CDL Engagement

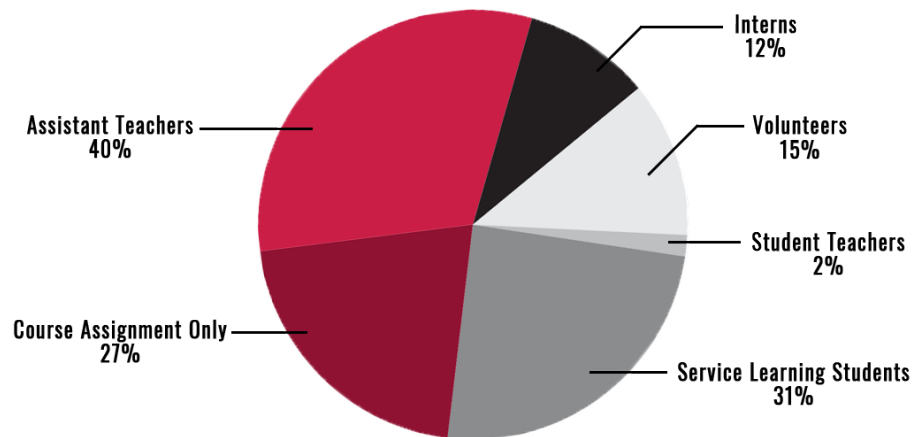


**5,422** Student Hours for Course Assignments



**\$453** Cost of Onboarding New UW Student

## College Students Placements



## Number of College Students in the CDL by Year

■ Coursework done through observation, interview or collaboration with staff
 ■ Coursework requiring classroom placement

2017 - 2018

64

175

2016 - 2017

37

95



“Thank you for allowing our students to observe in the preschool, it is always a rich, valuable experience”

— Josh Brown  
 Interim Field Work Coordinator  
 Occupational Therapy, School of Education

## UW-Madison Courses

School & Department	Course Number & Title	# of College Students
School of Human Ecology- Human Development and Family Studies	HDFS 663: Developmental and Family Assessment	36
School of Human Ecology- Human Development and Family Studies	HDFS 601: Internship/Workplace Experience Course	15
School of Human Ecology- Civil Society and Community Studies	CSCS 601: Internship/Workplace Experience Course	1
School of Human Ecology- Civil Society and Community Studies	CSCS 300: Nonprofit Sector: Overview and Foundations	1
School of Human Ecology- Design Studies	DS 341: Design Thinking for Transformation	5
School of Human Ecology- Consumer Sciences	CNSR SCI 201: Consumer Research and Analysis	2
School of Education- Educational Psychology	ED PSYCH 745: Designing and Managing the Learning Environment	3
School of Education- Educational Psychology	OCC THER 611: Professional Skills II: Communication & Interpersonal Skills in Occupational Therapy	27
School of Education- Curriculum and Instruction	CURRIC 660: Early Childhood Education	1
School of Education- Curriculum and Instruction	CURRIC 363: Practicum in Early Childhood Education in Kindergarten	3
School of Education- Curriculum and Instruction	CURRIC 240: Critical Aspects of Teaching, Schooling, and Education	8
School of Education- Rehabilitation Psychology and Special Education	RPSE 300: Individuals With Disabilities	2
College of Letters and Sciences- Psychology	PSYCH 460: Child Development	16

## Other University Courses

University & Department	Course Number & Title	# of College Students
Edgewood College- Education	ED 210: Infancy and Childhood	1
Edgewood College- Education	ED 693A: Student Teaching Placement	1
Madison College- Early Childhood Education	ECE Practicum 4: Student Teaching Placement	2
MATC Milwaukee- Child Development	CHILDD 179: Child Growth and Development	1
MATC Milwaukee- Child Development	CHILDD 188: Guiding Children's Behavior	1
UW Stout- Human Development and Family Studies	HDFS 491: Internship in Human Development and Family Studies	1
UW Stout- Special Education	SPED 505: Introduction to Early Childhood Special Education	1
UW Whitewater- Counseling Education	COUNSED 731: Counseling Across the Lifespan	1



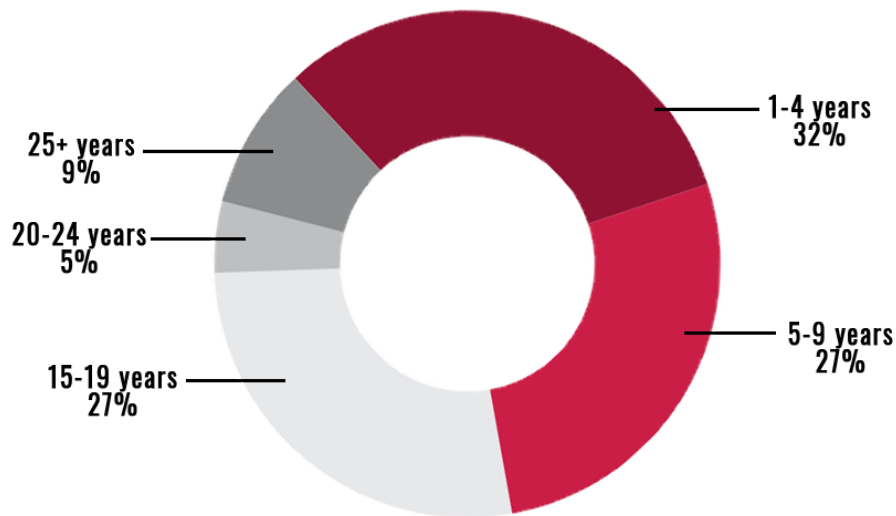
# OUR OUTREACH



**Jill Riley, Director**

As I reflect today on how I felt 18 years ago as the incoming Director of the Child Development Lab, I marvel at how our quality has remained a constant while we continue to grow in so many new ways. Excellence in providing the highest quality programming for young children has always been at the forefront of our foundational values. High quality starts with having an exceptional teaching staff. The longevity of our educators has a direct correlation to our ability to provide ongoing quality care. CDL early educators know and understand the critical importance of early childhood development. Everyday this knowledge informs their work and motivates their continued growth as they provide training and education to children, college students, and other early care and education colleagues in the field. Our early educators are the heart and soul of our program, and their dedication to outreach creates the dynamic synergy that is ever-present and thriving at the CDL today.

## Percent of CDL Staff by Years of Employment



## Accreditations



NECPA  
Accreditation achieved  
November 2019



Licensed by the  
State of  
Wisconsin



Accredited by  
City of  
Madison

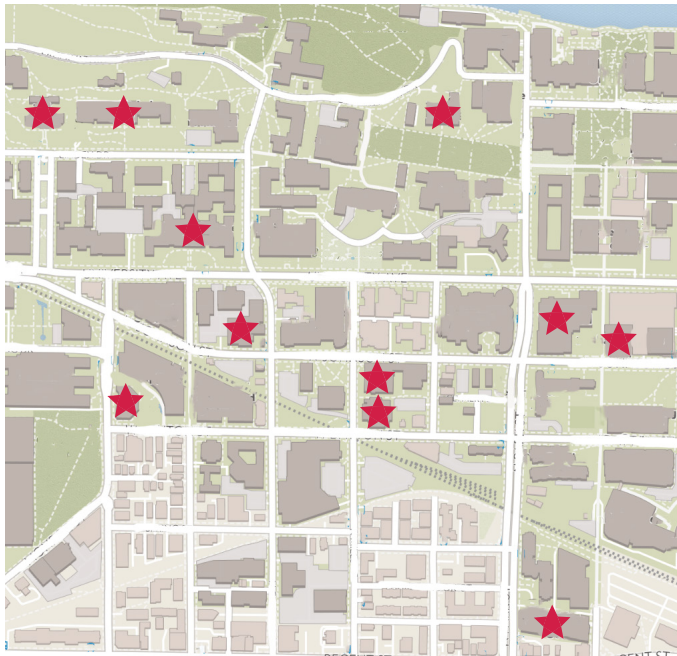


Young Star Rating of  
Five Stars



Breastfeeding Friendly Child Care  
Provider by the Wisconsin  
Breastfeeding Coalition

## CDL's Outreach at UW and Beyond



School of Human Ecology  
 School of Education  
 Communication Arts  
 College of Agricultural and Life Sciences  
 Educational Psychology  
 Department of Psychology  
 Occupational Therapy  
 UW MakerSpace  
 Office of Financial Aid  
 Office of Human Resources



University of Wisconsin-Madison  
 Madison College  
 Edgewood College  
 Madison Metropolitan School District (MMSD)  
 University of Wisconsin-Stout  
 University of Wisconsin-Whitewater  
 Milwaukee Area Technical College



Wisconsin  
 Illinois  
     University of Illinois at Chicago  
     University of Illinois at Urbana-Champaign  
 Japan  
     Kobe-Shoin Women's University  
 Guatemala  
     Universidad Rafael Landivar

Activity	Organization	CDL Staff	Title/Focus
<b>Presentations &amp; Tours</b>			
Program Tour	The Playing Field	Director, Jill Riley	Program tour for staff from The Playing Field to get ideas for what works in preschool space
Program Tour	Kohl's Child Development Center	Director, Jill Riley; Ex. Director, Amy Wagner	Tour & brainstorming for future collaboration on SoHE HDFS summer internships with Kohl's Child Development Center
Program Tour and Interview	Precollege Enrichment Opportunity Program for Learning Excellence (PEOPLE)	Head Teacher, Katy Brechlin and Ex. Director, Amy Wagner	Provided parent tour for 6 high school students from low-income areas who are potentially the first in their families to attend college
Presentation	Launching into Literacy and Math Conference	Head Teachers, Mary Pierick and Emmi Lohrentz	"Language and Literacy in the Inclusive Classroom"
Presentation	Wisconsin Alliance of Infant Mental Health	Ex. Director, Amy Wagner	"Reflective Practice in Early Childhood Education Programs"
Presentation	UW-Whitewater Early Childhood Conference	Head Teacher, Dana Schmock	"Learning to Walk on Steady Ground: Foundations of Learning for Infants and Toddlers"
Panel Discussion	National Conference of State Legislatures	Ex. Director, Amy Wagner	Early care and education panel discussion
<b>Community Collaborations</b>			
Board Member	Beyond Dane Chapter of WECA	Head Teacher, Emmi Lohrentz	Helped organize and coordinate events and trainings for early childhood educators in Madison area
Team Member	Campus Director's Consortium	Ex. Director, Amy Wagner; Director, Jill Riley; Asst. Directors, Paula Evenson and Terri Strother	Collaborated with UW ECE programs sponsored by the Office of Campus Child Care and Family Resources
Team Member	MMSD 4K Professional Development Team	Director, Jill Riley	Helped organize and develop 4K trainings for district and community 4K teachers
Representative	Read to Lead Council, State of Wisconsin, Department of Children & Families	Director, Jill Riley	Early Childhood Representative for state-wide literacy council

Activity	Organization	CDL Staff	Title/Focus
<b>Campus Outreach</b>			
Child Trends News Service	Prof. Heather Kirkorian, Laura M. Secord Chair in Early Childhood Development/ School of Human Ecology	Ex. Director, Amy Wagner	Filmed Dr. Heather Kirkorian's research to be featured in one of their videos, 18 broadcasts nationwide with an estimated potential viewership of 283,000 (according to Nielsen ratings)
Mindfulness in Parenting & Early Childhood Education Programs	Prof. Larissa Duncan, Director of the Center for Child and Family Wellbeing School of Human Ecology UW Extension	Head Teacher, Katy Brechlin and Float Teacher, Sarah Yannett	Helped program assistant to create library of inclusive books for children and offered opportunities to read these books to CDL children
Movement Class for 3-year-olds	Danny Hurwitz, CDL Parent and Student/ Occupational Therapy/ Department of Kinesiology	Head Teacher, Jaclyn Schneider and Asst. Director, Paula Evenson	Worked with 3-year-olds in a weekly movement class to gain hands-on experience working with young children
Design Thinking Collaboration	Lesley Sager, Faculty Associate/ School of Human Ecology	Head Teachers, Jaclyn Schneider, Sarah Watrud, Linda Dykstra	Class worked with CDL staff on transition between the indoor classroom and the beyond with a focus on inquiry-based learning
Farm-to-Table Collaboration	Vanessa Herald, Farm-to-Institution Outreach Specialist/ Center for Integrated Agricultural Systems/ Becky Breda-Badger Organics, LLC/ Kathleen Eberle/ Slow Foods UW Madison Chapter	Head Teacher, Jaclyn Schneider and Asst. Director, Paula Evenson	Two UW Slow Food Volunteers made local snacks bi-monthly for the CDL children and sharing the recipes with the parents
Collaboration with Horticulture	Claudia Calderon, Assistant Faculty Associate Department of Horticulture	Head Teacher, Malika Gerund	CDL Garden, planted different kinds of flowers, herbs and veggies
UW Madison Wellness Community of Practice	Nicole Youngberg, Employee Wellness Leader, Office of Human Resources	Asst. Director, Paula Evenson	Networked with other wellness champions in various units across campus and built new wellness initiative
Collaboration with the UW Bilateral Exchange Program	Claudia Calderon, Assistant Faculty Associate UW Dept. of Horticulture	Head Teachers, Jaclyn Schneider and Emmi Lohrentz	"Sustainable Food Systems" supported by a grant from the 100,000 Strong in the Americas and the Morgridge Center for Public Service; Six Guatemalan Students from the Universidad Rafael Landivar came to help the CDL with gardening
Preparation of Children's Art	UW Office of Student Financial Aid/ Wally Douma Student Art Gallery	Head Teacher, Laura Feist	Children's Art Display
Collaboration with Design Studies	Marianne Fairbanks, Assistant Professor/ Design Studies	Head Teachers, Esther Emmerich and Linda Dykstra	Designed and burned images onto screens, CDL children printed their own pinneys

# CASE STUDY

## DESIGN THINKING & CDL COURSE COLLABORATION

In the summer of 2018, a group of students in Faculty Associate Lesley Sager's Design Thinking course focused on farm-to-table designs. The students explored designing ways to get fresh food to early childhood centers. Lead teachers, Jaclyn Schneider and Emmi Lohrentz, advised the students on their design prototypes. At the end of the course, the Bunny class went to the UW MakerSpace to test out and explore the university students' final course designs.

“The collaboration between the CDL and Design Studies was an amazing opportunity for design students to get real world feedback from the audience (children) that they were designing for. The CDL staff provided students with amazing feedback and an opportunity to test their design ideas.

We are so fortunate to have such an amazing resource as the CDL for our students.”

— Lesley Sager, Faculty Associate, Design Studies



“This was an awesome opportunity to link with SoHE and build a relationship with a Design Studies course. Having the preschool children visit the MakerSpace and see college students who have designed and created their own products was very inspiring for the children.

Children went back to school inspired and wanted to design their own creations using cardboard boxes, tape, et cetera. It has inspired the Bunny Room to develop and expand our ‘junk modeling’ area and encouraged children to work with different materials, combining them to design and create for themselves.”

— Jaclyn Schneider, Instructional Specialist, UW Child Development Lab

# FIVE YEAR STRATEGIC PLAN

Integrate the CDL more closely with SoHE's missions, goals, and initiatives to encourage state-of-the-art research reflecting the diverse communities, cultures, and environments of early childhood development.

To become a model laboratory preschool that integrates the best early childhood development experience with a prolific scholarship, teaching, and outreach agenda with local, national, and international impact.

To support an innovative research community with dynamic campus and community partnerships and transform early childhood development research on campus, locally, nationally, and internationally with an emphasis on representing children and families in diverse contexts.

Engage UW-Madison undergraduates and graduate students in high-impact practices with the CDL through research, teaching, and outreach becoming the leaders who will shape the discourse in early childhood development in the 21st century, particularly pertaining to enhancing the well-being of children and families across diverse sociodemographic contexts.

To create a sustainable financial model that reflects the value the CDL brings to SoHE, UW-Madison, and the local, national, and international communities as well as provides the ability to plan and predict in order to meet research and teaching missions.

Diversify the CDL population to reflect the ethnic, cultural, disability, socioeconomic, and family composition diversity represented in the community at large in order to more effectively prepare our students for future settings, to meet the needs of researchers, and to meet the needs of the community for high quality care.



"I saw so much growth, not only in the children, but in myself and my abilities."

— Emma Bare,  
CDL HDFS Spring 2018 Intern

"It's been a huge bonus having so many consent forms returned and having you there to be a reassuring presence for the shy kid [during research studies]."

—Professor Louise Mares,  
Department of Communication Arts

"Your active involvement and your knowledge of the kids' individual circumstances increased the quality of the collected data."

—Dominik Piehlmaier, PhD  
Candidate, Consumer Behavior,  
School of Human Ecology



**School of Human Ecology**

UNIVERSITY OF WISCONSIN-MADISON

1300 Linden Drive  
Madison, WI 53706  
[sohe.wisc.edu/cdl](http://sohe.wisc.edu/cdl)