

CHILD DEVELOPMENT LAB

Research, Teaching, Outreach

2018-2019 ANNUAL REPORT



School of Human Ecology
UNIVERSITY OF WISCONSIN-MADISON

TABLE OF CONTENTS

Message from the Executive Director	03
Program Overview	04
Who We Are	05
Research	06
- Highlight: Research & Student Coordinator	07
- Feature: National Research Impact	08
Teaching	09
- Highlight: Students in the CDL	10
- Feature: First-Year Interest Group	11
Outreach	12
- Highlight: CDL Supports PEOPLE Program	13
- Feature: Lee Kelly: A Life Connected to the CDL	14
Photo Collage	15



UW CHILD DEVELOPMENT LAB

RESEARCH

TEACHING

OUTREACH



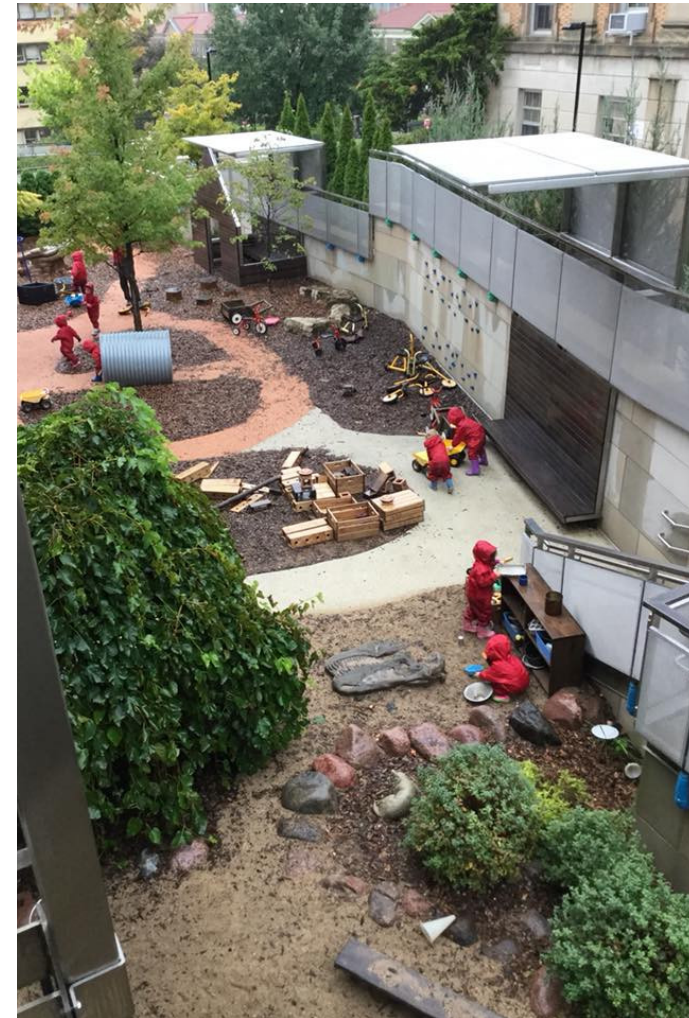
The Child Development Lab (CDL) is a laboratory early child development center within the School of Human Ecology that provides year-round, high-quality education for 90 young children from infancy to 4K. This year, the CDL aimed to build capacity for our three-part mission of research, teaching, and outreach.

In order to better serve the needs of students, faculty, and CDL teachers, the CDL's Research Team expanded this year to include a new Research and Student Coordinator. The addition of this role has allowed the program to drastically increase the number of undergraduates the CDL serves for coursework and projects.

We also formalized our undergraduate internship training program in order to improve the quality of our undergraduates' experience in the CDL. Outside of the CDL, we participated in many outreach opportunities across the state and beyond.

We welcome you to learn more about how the CDL strives to be a model program for relationship-based teaching and research.

Amy Lee Wagner
Executive Director



Program Overview



This year at the CDL, we developed a unique and flourishing pilot in **Peer-to-Peer Reflective Practice and Reflective Supervision** in collaboration with the Infant Early Childhood and Family Mental Health team at the UW Department of Psychiatry.

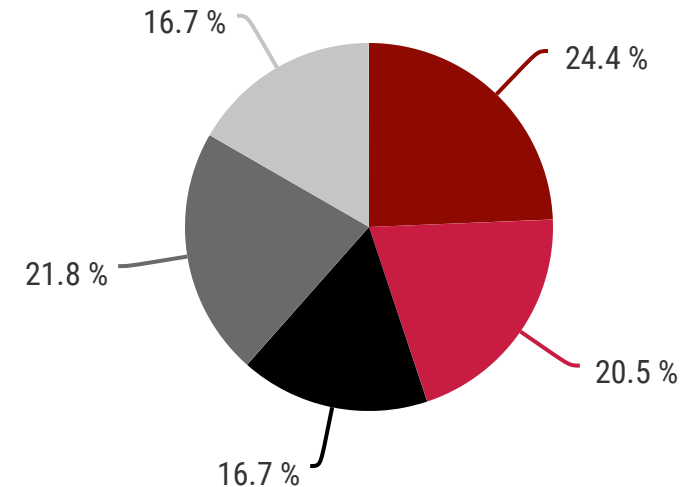
An essential element of this practice is devoting regular time and space to deeply engage in this meaningful work. Having dedicated time for reflective practice allows teachers a safe and trusting space to slow down, take a step back, and open up to exploring attitudes, beliefs, and perceptions encompassed in their daily work. As teachers have been building these skills and capacity for inner inquiry, we have experienced more thoughtful, respectful, and productive relationships and interactions with each other. Through a ripple effect, **Reflective Practice has also strengthened the impact of the work we do with children, families, students, researchers, and the early childhood community.**

Jill Riley
Director



Reflective Practice Pilot Project made possible by UW-Madison
Office of Child Care and Family Resources (OCCFR) Mini Grants

Parents We Serve



- Student Parents
- Staff Parents
- Faculty Parents
- Both Parents UW-Affiliated
- Neither Parent UW-Affiliated



Numbers at a Glance

Research Studies

14

Courses Supported

17

Outreach Activities

36

WHO WE ARE

ADMINISTRATORS

Jill Riley



Director

Amy Lee Wagner



Executive Director

Terri Strother



Assistant Director

Kristin Orlowski



Research & Student Coordinator

FACULTY & GRADUATE STUDENTS

Heather Kirkorian



Laura M. Secord Chair in Early Childhood Development, Faculty Director of the CDL

Elizabeth Skora Horgan



Shannon Graduate Fellow in Early Childhood Development

Jamie Hawkins



Leola Culver & Nelsrud Family Graduate Fellow in Early Childhood Development

LEAD TEACHERS

Anna Boldt



Katy Brechlin



Sarah Bruhn



Linda Dykstra



Esther Emmerich



Casey Feist



Laura Feist



Kayla Gardner



Malika Guend



Kris Krystofiak



Maria Lenerz



Emmi Lohrentz



Mary Pierick



Dana Schmock



Jaclyn Schneider



Sarah Watrud



Sarah Yannet



Research



As the Faculty Director of the CDL, I am invested in advancing the research potential of the CDL for students and faculty. This year, the CDL has strengthened our presence on campus by **adding a Research and Student Coordinator** to our team. This addition has increased our capacity to host studies and elevated CDL families' participation in research, as we are able to focus more on child-centered research practices.

In 2018-19, we were able to **accommodate more student researchers than ever**. We provided support for graduate students' dissertations and other research studies from several departments across campus.

Heather Kirkorian
Faculty Director

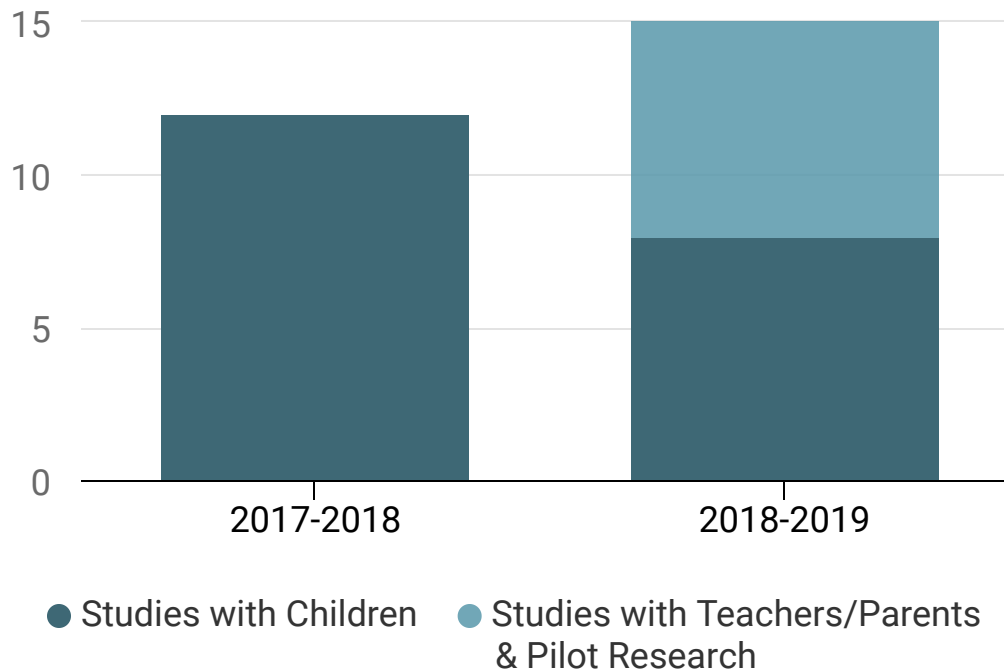


95% of CDL parents agree that they **value the CDL's research mission**



125% increase in number of **research studies**

Number of Research Studies by Year



282

Research Visits
with CDL
Children



44

Student
Researchers



252

Completed
Consent Forms

Research & Student Coordinator



In 2018, our focus was to **sustainably increase the CDL's capacity to work with students and researchers**. To achieve this goal, we welcomed Kristin Orlowski as our Research and Student Coordinator (RSC). Our RSC coordinates all of the research studies, student projects, and observations within the CDL. The RSC also devotes regular time in the classroom to build rapport with our CDL children, fostering a **relationship-based research approach** that supports our families.

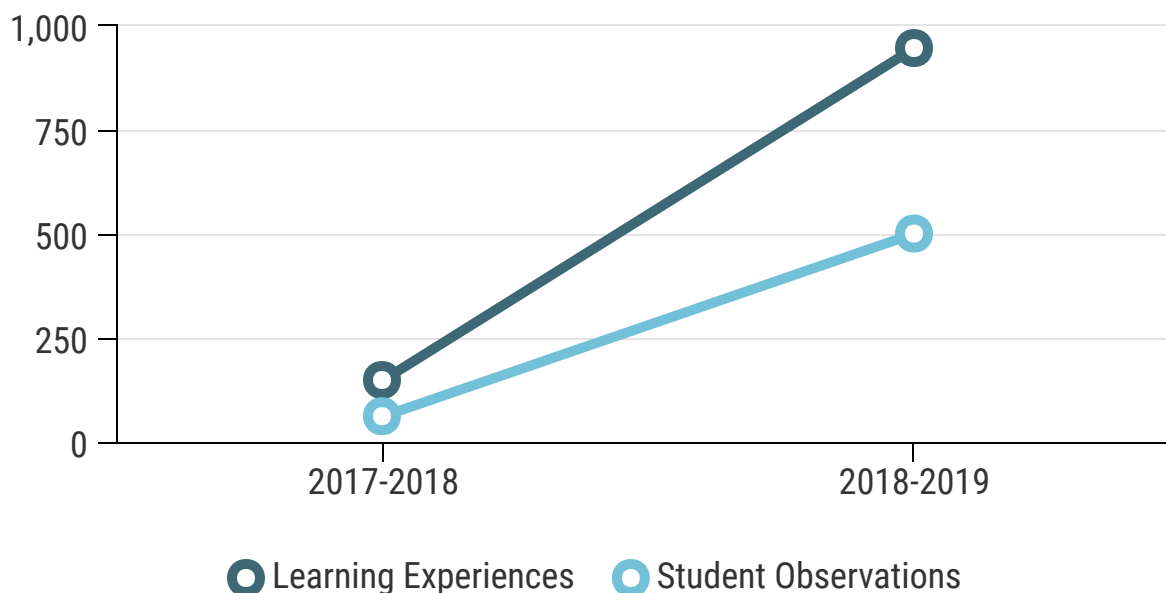
Our team's expansion also allowed us to streamline our research process to make **collaboration more accessible** for graduate students. We also increased the amount of undergraduate opportunities in the CDL through offering **947 hands-on learning experiences and 501 observations**.

"I've been doing research in the Preschool for the past 4 years. My experience a few years ago compared to now is very different. There have been a lot of policies put into place to make it a lot easier for people, especially for graduate students, to do research in the Preschool."

- Roxy Etta
HDFS Graduate Student



Student Involvement in the CDL



National Research Impact

This year, Dr. Heather Kirkorian was interviewed by *Child Trends* about her research on **children and interactive media**. *Child Trends* is the nation's leading research organization focused exclusively on improving the lives of children and youth.

In the interview, Dr. Kirkorian describes her studies that were conducted in the Child Development Lab. **These experiments asked children to apply what they were learning on screen into the real world.**

Findings from this research suggest that **toddlers have a difficult time translating information from screens to real life**. For some toddlers, interacting with the screen (e.g., using a well-designed app) can help them connect on-screen to off-screen experiences. Dr. Kirkorian expressed that **teachers and parents offer the most valuable interactive learning experiences, whether with a screen or not.**

Check out the QR Code for full interview or visit <https://www.youtube.com/watch?v=fMUA8yUjvEU>



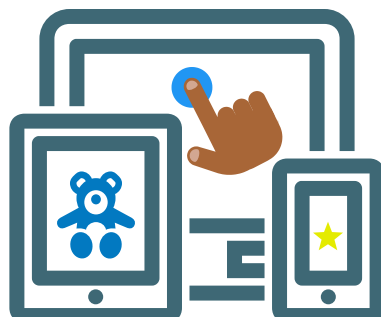
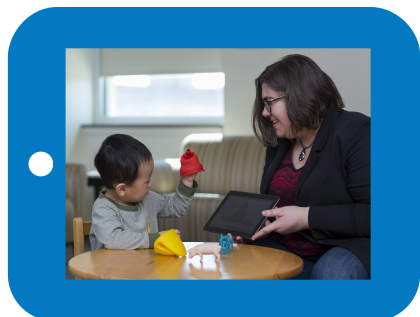
WATCH
HERE



283,000 VIEWS

18

BROADCASTS
ACROSS THE UNITED STATES



Teaching

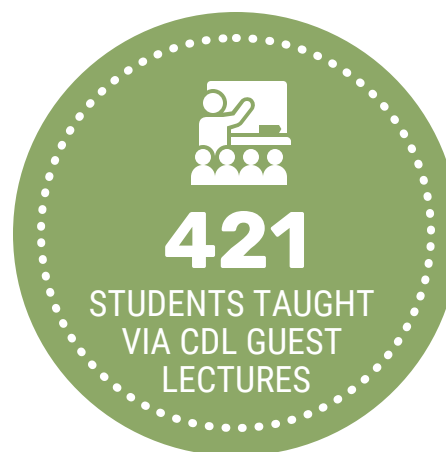


This year our team aimed to increase the number of UW students served, diversify the teaching activities in which the students were engaged and enhance the quality of those experiences. I am proud to say that **our progress in this area exceeded our greatest expectations!** We had students doing academic projects in the CDL for classes across campus.

In addition, the CDL team focused on increasing the number of Human Development and Family Studies (HDFS) internships offered and improving our internship experience for our undergraduate students. **With support from our donors, SoHE was able to make all 31 HDFS internships in the CDL completely paid, which increases the access and equity of this rich learning experience for all UW students.** Our Research and Student Coordinator streamlined the application, interview, and onboarding process for our interns, and the CDL teachers worked hard this year to create monthly intern trainings for our UW students. Each intern had a weekly one-on-one reflective meeting with their CDL Lead Teacher. Our efforts resulted in a **more meaningful high-impact learning experience for each of our interns.** The CDL is truly becoming a hub for students across campus to get real-life learning experiences!

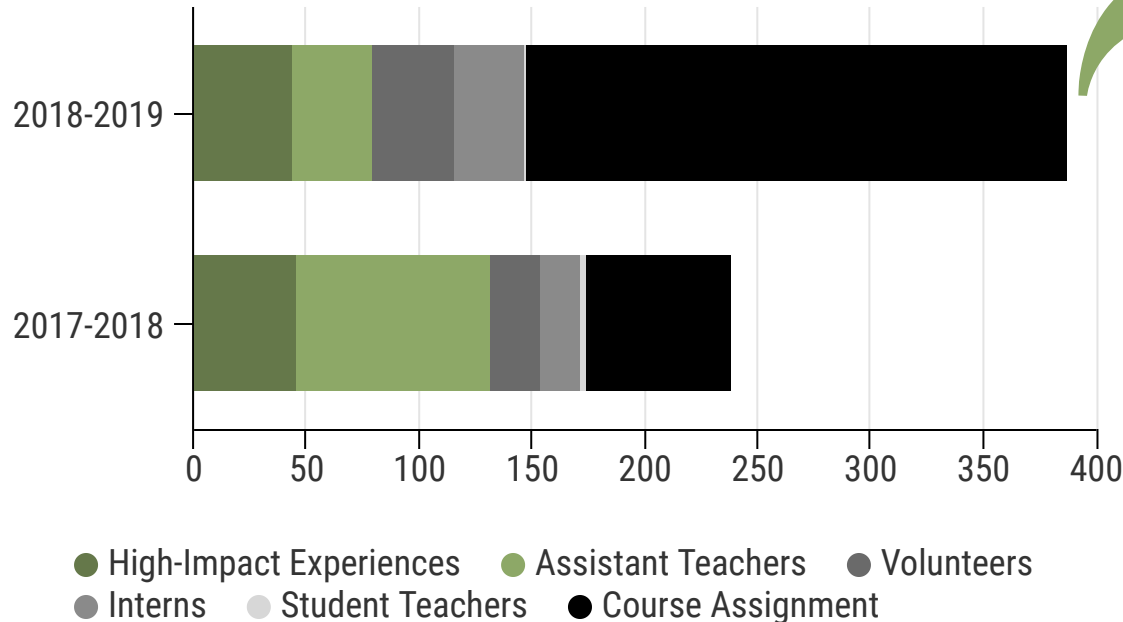
Amy Lee Wagner
Executive Director of the CDL


*"It [the CDL] like
makes your classes
come to life..."*
-HDFS Student








Students in the CDL

Number of Students in the CDL by Year



 **5**
**SCHOOLS
REPRESENTED BY OUR
UNDERGRADUATES**

-  School of Human Ecology
-  School of Education
-  School of Agriculture
-  College of Letters & Science
-  School of Engineering



"The past 4 years at the Child Development Lab have brought me more than I ever dreamed. There I have found my passion, my purpose, and my place in the world. The incredible kiddos I'm blessed to spend each day with have taught me more than I ever would have [learned] in a lecture hall, and I am forever indebted to them."

- Sarah Franke
CDL Intern

First-Year Interest Group

This fall, the CDL had a semester-long **collaboration with the UW's First-Year Interest Group (FIG) Projects** consisting of 40 freshman from across campus. The FIG course was taught by Lesley Sager (**SoHE Design Studies**), Karl Williamson (**School of Engineering**), and Lennon Rodgers (**UW Makerspace**). UW students worked with the CDL to **create products aimed at bringing the wonder of the "beyond"** found in the UW's outdoor spaces into the CDL curriculum. The UW students went through the **Design Thinking process** to create their projects for the children of the CDL:

1. Empathizing with the staff and children
2. Researching and synthesizing findings
3. Brainstorming ideas
4. Creating prototypes
5. Testing prototypes for feedback and iterations
6. Making adjustments and creating final products
7. Presenting final products at the School of Engineering's Fall conference
8. Presenting and gifting their projects to the CDL children



Outreach

The CDL's outreach mission is how we honor the UW's principle of **the Wisconsin Idea**, which is the University's commitment that education should influence people's lives beyond the boundaries of the classroom. The CDL engages in outreach in 4 major ways:

1. Serving as a **model early care and education center** to guide community practices
2. Sharing our expertise with the early care and education community by **presenting at professional conferences** and providing local trainings
3. Advocating for **high-quality child care** for children and families
4. Providing access to high-quality learning opportunities for **underrepresented high school students in the community**

We are continually devoted to having an impact on the community to improve child well-being in the state of Wisconsin and beyond.



CDL Supports PEOPLE Program



In the summer of 2019, three high school students who participated in the PEOPLE* program were placed in the CDL based on their career interests of working with children. Our PEOPLE students received support during the school year in various areas, such as writing applications and cover letters. During summer, the students participated in more intensive, camp-like activities. **These students gained practical skills** like learning how to teach, spending time in the classroom, and implementing skills they had learned. At the end of the program, **the students presented what they learned from their experience and gained insight for their future career.**

In preparation for the PEOPLE students who would be placed in the CDL, our administrative staff participated in a special training on how to supervise and support high school students.

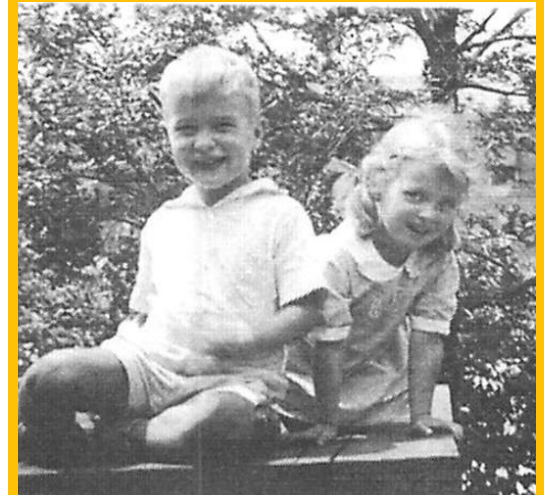
* UW-Madison's **Precollege Enrichment Opportunity Program for Learning Excellence (PEOPLE)** started in 1999 with 66 high school students from Milwaukee, Wisconsin. PEOPLE has grown to over 1,300 students from 8th graders to college seniors. Their vision is to be the premier college access program for student success. PEOPLE is the UW's most successful venture in creating such opportunities and **improving campus diversity**. The CDL values the mission of PEOPLE and proudly hosts their students in our program every year.



Lee Kelly: A Life Connected to the CDL

The CDL is lucky to have a life-long relationship with one of our former students, Lee McGann Kelly. **Lee Kelly attended the UW Nursery School from 1938 to 1939.** Lee also attended UW as a college student. During her time at the UW, she had an internship at the UW Hospital, working in the nursery and classroom for school age children. Lee Kelly **graduated from the School of Human Ecology with a degree in Child Development in 1977.**

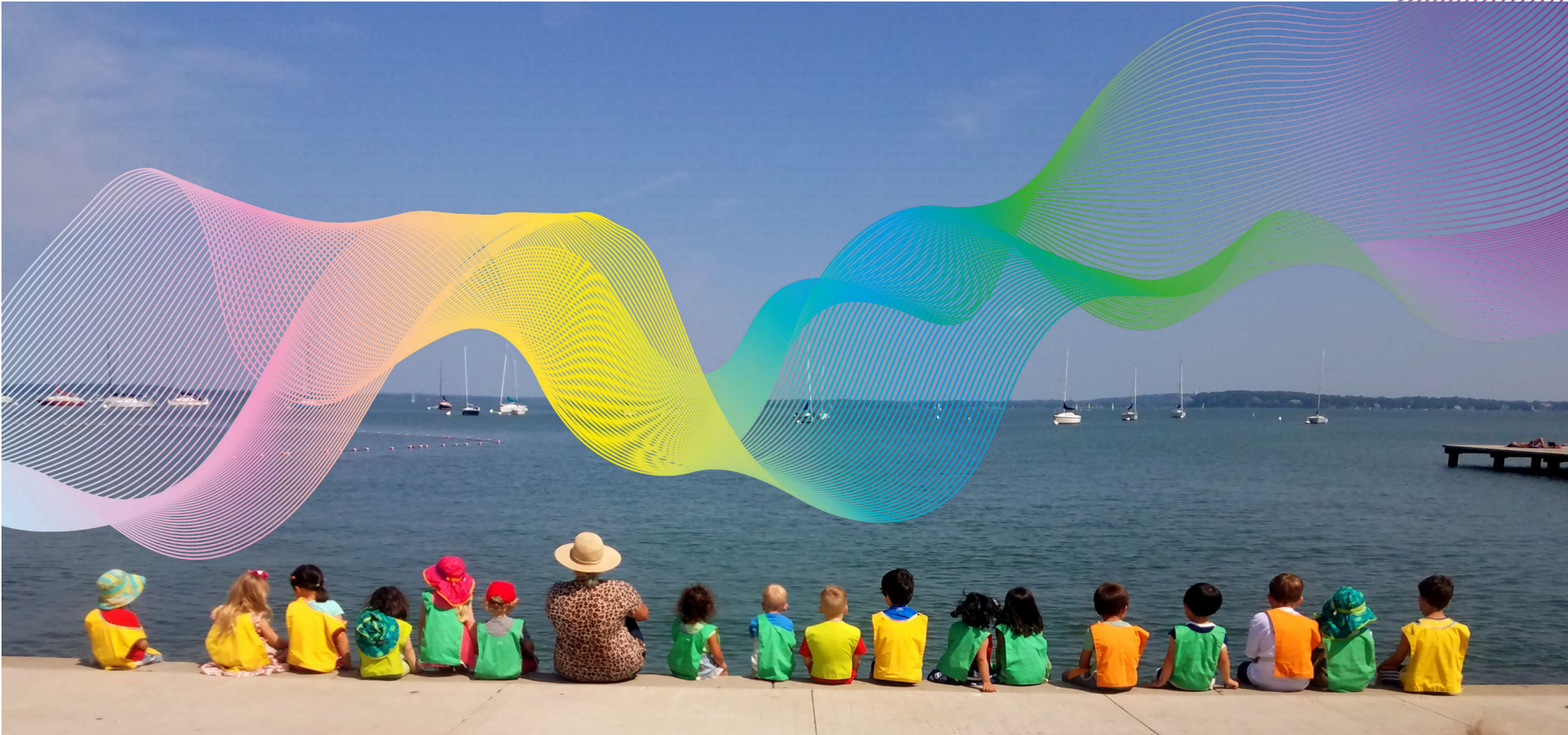
Lee has had a life-long passion for children and their well-being and has continued to be an important part of the CDL community. This year, **Lee worked with the children in the Bunny classroom to sew quilts for the kids at the UW Children's Hospital.** The class took a field trip with Lee to deliver the quilts to the hospital, and the Bunnies got a chance to check out the medi-copter. **Lee has been a part of the CDL for 83 years** and is a testament to how the CDL's relationship-based program can form relationships that endure! Lee is honored on SoHE's 100 Women Wall for her support to SoHE's initiatives that impact children and families.



*Learn more
about Lee
Kelly and the
100 Women
Wall here*







NECPA Accreditation
Achieved November 2019



Young Star
Rating of Five
Stars



Breastfeeding Friendly Child
Care Provider by the
Wisconsin Breastfeeding
Coalition



Licensed by the State
of Wisconsin



Accredited by City of
Madison



Child Development Lab
SCHOOL OF HUMAN ECOLOGY
UNIVERSITY OF WISCONSIN-MADISON